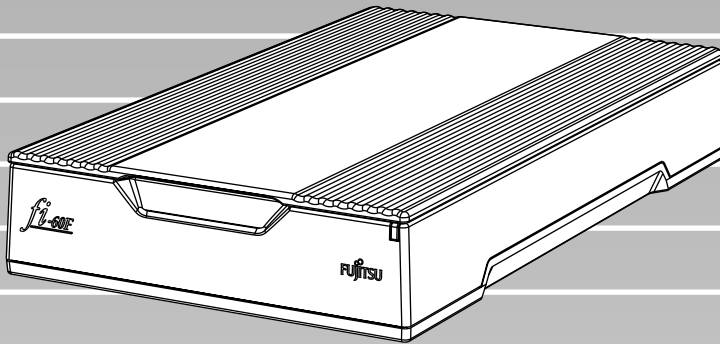




P3PC-1102-01EN

fi-60F Image Scanner



Getting Started

FUJITSU

CONTENTS

■ Regulatory Information	ii
■ Note, Liability	iii
■ Safety Precautions	iv
Chapter 1 PREPARING THE SCANNER	1
1.1 Checking the Contents of the Scanner Package.....	1
1.2 Names and Functions of Parts.....	1
Chapter 2 INSTALLATION OF THE SCANNER	2
2.1 Installing the Scanner Application	2
2.2 Installing the Scanner	5
2.3 Connecting the Scanner to Your PC.....	6
2.4 Confirming the Installation.....	7
2.5 Installing Adobe® Acrobat® Reader	8
Appendix 1 TROUBLESHOOTING	AP-1
Appendix 2 DAILY CARE	AP-2

INTRODUCTION

Thank you for purchasing the fi-60F Scanner product. This document describes how to handle fi-60F Scanner and basic operation methods. Before you start using fi-60F Scanner be sure to thoroughly read this manual to ensure correct use.

The "Operator's Guide" is stored on the Setup Disk. The guide provides useful and detailed information on operations when you would like to use advanced features, daily maintenance of the scanner, replacement of consumables. Please also read the Operator's Guide for your reference.

■ Regulatory Information

FCC Declaration

This equipment has been tested and found to comply with the limits for a Class B digital device, pursuant to Part 15 of the FCC Rules. These limits are designed to provide reasonable protection against harmful interference in a residential installation. This equipment generates, uses, and can radiate radio frequency energy and, if not installed and used in accordance with the instruction manual, may cause harmful interference to radio communications. However, there is no guarantee that interference will not occur in a particular installation. If this equipment does cause harmful interference to radio or television reception, which can be determined by turning the equipment off and on, the user is encouraged to try to correct the interference by one or more of the following measures:

- Reorient or relocate the receiving antenna.
- Increase the separation between the equipment and receiver.
- Connect the equipment into an outlet on a circuit different from that to which the receiver is located.
- Consult your dealer or an experienced radio/TV technician.

FCC warning: Changes or modifications not expressly approved by the party responsible for compliance could void the user's authority to operate the equipment.



The use of a shielded interface cable is required to comply with the Class B limits of Part 15 of FCC rules.

The length of the AC cable must be 2 meters (6.6 feet) or less.



Canadian DOC Regulations

This digital apparatus does not exceed the Class B limit for radio noise emissions from digital apparatus set out in the Radio interference Regulations of the Canadian Department of Communications.

This Class B digital apparatus complies with Canadian ICES-003.

Le présent appareil numérique n'émet pas de bruits radioélectriques dépassant les limites applicables aux appareils numériques de la classe B prescrites dans le Règlement sur le brouillage radioélectrique dicté par le ministère des Communications du Canada.

Cet appareil numérique de la classe B est conforme à la norme NMB-003 du Canada.

Bescheinigung des Herstellers / Importeurs

Hiermit wird bescheinigt, daß *der/die/das*

fi-60F

- In Übereinstimmung mit den Bestimmungen der EN45014(CE) funktentstört ist.
- Laut Maschinenlärminformationsverordnung 3. GS GV, 18.01.1991: Der höchste Schalldruckpegel beträgt 70 dB (A) oder weniger gemäß ISO/7779.


International ENERGY STAR® Program

As an ENERGY STAR® Partner, PFU LIMITED has determined that this product meets the ENERGY STAR® guidelines for energy efficiency.

The International ENERGY STAR® Office Equipment Program is an international program that promotes energy saving through the penetration of energy efficient computers and



other office equipment. The program backs the development and dissemination of products with functions that effectively reduce energy consumption. It is an open system in which business proprietors can participate voluntarily. The targeted products are office equipment such as computers, monitors, printers, facsimiles, copiers, scanners, and multifunction devices.

Their standards and logos () are uniform among participating nations.

Use in High-safety Applications

This product has been designed and manufactured on the assumption that it will be used in office, personal, domestic, regular industrial, and general-purpose applications. It has not been designed and manufactured for use in applications (simply called "high-safety applications" from here on) that directly involve danger to life and health when a high degree of safety is required, for example, in the control of nuclear reactions at nuclear power facilities, automatic flight control of aircraft, air traffic control, operation control in mass-transport systems, medical equipment for sustaining life, and missile firing control in weapons systems, and when provisionally the safety in question is not ensured. The user should use this product with adopting measures for ensuring safety in such high-safety applications. PFU LIMITED assumes no liability whatsoever for damages arising from use of this product by the user in high-safety applications, and for any claims or compensation for damages by the user or a third party.

Trademarks

Microsoft and Windows are registered trademarks of Microsoft Corporation in the United States and/or other countries.

ISIS, QuickScan and their respective logos are trademarks or registered trademarks of Pixel Translations, a division of Captiva Software Corporation in the United States.

Adobe, the Adobe logo, and Acrobat are either registered trademarks of Adobe Systems Incorporated in the United States and/or other countries.

Other product names are the trademarks or registered trademarks of the respective companies.

How Trademarks Are Indicated In This Manual

References to operating systems (OS) are indicated as follows:

Windows 98	Microsoft® Windows® 98 operating system.
Windows Me	Microsoft® Windows® Millennium Edition operating system.
Windows 2000	Microsoft® Windows® 2000 Professional operating system.
Windows XP	Microsoft® Windows® XP Professional operating system, Microsoft® Windows® XP Home Edition operating system.

Where there is no distinction between the different versions of the above operating system, the general term "Windows " is used.

Manufacturer

PFU LIMITED

International Sales Dept., Imaging Business
Division, Products Group
Solid Square East Tower, 580 Horikawa-cho,
Saiwai-ku, Kawasaki-shi Kanagawa 212-8563,
Japan
Phone : (81-44) 540-4538

All Rights Reserved, Copyright© PFU LIMITED 2004.

■ Note, Liability

BEFORE USING THIS PRODUCT, PLEASE READ THIS MANUAL CAREFULLY. IF THIS PRODUCT IS NOT USED CORRECTLY, UNEXPECTED INJURY CAN OCCUR TO USERS OR BYSTANDERS.

Keep this manual in a safe place so that it can be easily referred to during use of this product.

While all efforts have been made to ensure the accuracy of all information in this manual, PFU assumes no liability to any party for any damage caused by errors or omissions or by statements of any kind in this manual, its updates or supplements, whether such errors are omissions or statements resulting from negligence, accidents, or any other cause. PFU further assumes no liability arising from the application or use of any

product or system described herein; nor any liability for incidental or consequential damages arising from the use of this manual. PFU disclaims all warranties regarding the information contained herein, whether expressed, implied, or statutory.

Warning Indications Used In This Manual



This indication alerts operators to an operation that, if not strictly observed, may result in severe injury or death.



This indication alerts operators to an operation that, if not strictly observed, may result in safety hazards to personnel or damage to equipment.

Symbols Used In This Manual



This symbol alerts operators to particularly important information. Be sure to read this information.



This symbol alerts operators to helpful advice regarding operation.



A TRIANGLE symbol indicates that special care and attention is required. The drawing inside the triangle shows the specific caution.



A CIRCLE with a diagonal line inside shows action which users may not perform. The drawing inside or under the circle shows the specific action that is not allowed.



Outline characters on a colored background show instructions users should follow. It may also include the drawing that shows the specific instruction.

Screen Examples In This Manual

The screen examples in this manual are subject to change without notice in the interest of product improvement. If the actual displayed screen differs from the screen examples in this manual, operate by following the actual displayed screen while referring to the User's Manual of the scanner application you are using.

The screenshots in this manual were captured from FUJITSU TWAIN32 scanner driver, ScandAll 21 Image Capturing Utility Software, FUJITSU ISIS scanner driver, QuickScan™ image capturing software and Adobe® Acrobat®.

About Maintenance

The user must not perform repairs on this scanner. Contact the store where you purchased the scanner or an authorized FUJITSU Image Scanner service provider to have repairs done on this product.

■ Safety Precautions



Do not damage the AC cable.



A damaged AC cable may cause fire or electric shock. Do not place heavy objects on AC cables, or pull, bend, twist, heat, damage or modify AC cables.

Do not use damaged AC cables or power plugs, or install any cables or power plugs to loose wall sockets.

Use only specified AC cables and connector cables.



Use only specified AC cables and connector cables. Failure to use the correct cables might cause electric shock and/or equipment failure.

Please don't use the AC cable provided with this scanner for other devices, since this might cause equipment failure and other troubles or an electric shock.

Use this scanner only at the indicated power voltage. Do not connect to multiple-power strips.



Use this scanner only at the indicated power voltage and current. Improper power voltage and current might cause fire or electric shock. Do not connect to multiple-power strips.

Do not touch the AC cable with wet hands.



Do not touch the power plug with wet hands. Doing so might cause electric shock.

Wipe any dust from the power plug.



Wipe off any dust from metal parts on the power plug or metal fittings with a soft, dry cloth. Accumulated dust might cause fire or electric shock.

Do not install the device in locations that has oil smoke, steam, humidity, and dust.



Do not install the scanner in locations subject to oil smoke, steam, humidity, and dust. Doing so might cause a fire or electric shock.

Turn the scanner OFF if it is damaged.



If the scanner is damaged for any reason, disconnect immediately the power plug in order to turn out the scanner. Contact the store where you purchased the scanner.

Do not put liquids inside the scanner.



Do not insert or drop metal objects in to the scanner. Do not scan wet documents or documents with paper clips or staples. Do not splash or allow the scanner to get wet.



If foreign objects (water, small metal objects, liquids, etc.) get inside the scanner, disconnect immediately the power plug in order to turn out the scanner. Then, contact the store where you bought the scanner or the Maintenance Service Center. Pay particular attention to this warning in households where there are small children.



Do not touch the inside of the scanner unless necessary.



Do not take apart or modify the scanner. The inside of the scanner contains high-voltage components. Touching these components might cause electric shock or fire.

Do not use the scanner if there is a strange odor.



If you detect excessive heat coming from the device or detect other problems such as smoke, strange smells or noises, disconnect immediately the power plug in order to turn out the scanner. Make sure that any smoke coming from it has stopped, before contacting the store where you bought the scanner or an authorized FUJITSU scanner service provider.



Do not install the scanner on unstable surfaces.



Make sure that the scanner is installed on a flat, level surface and that none of its parts extend beyond the surface top, such as a desk or table. Do not install the scanner on unstable surfaces. Install the scanner on a level surface that is free of vibration to prevent it from falling. Install the scanner on a strong surface that will support the weight of the scanner and other devices.

Do not place heavy objects or stand on top of the scanner.



Do not place heavy objects on the scanner or use the scanner's surface top to perform other work. Improper installation might cause injuries and equipment failure.

Firmly insert the power plug.



Firmly insert the power plug as far it can go into the power outlet.

Do not use the scanner immediately after moving it from a cold place into a warm room.



Do not use the device immediately after moving it from a cold place into a warm room. Condensation may occur, which might lead to scanning errors. Let the device dry about one or two hours before you use it.

Before moving the scanner, disconnect the power plug from the power outlet.



Do not move the scanner with the power and interface cables connected as this can damage the cables, which can later cause fire, electric shock as well as injury. Before moving the scanner, be sure to disconnect the power plug from the power outlet, and all other data cables. Make sure that the floor is free of any obstructions.

Protect the scanner from static electricity.



Install the scanner away from strong magnetic fields and other sources of electronic noise. Also, protect the scanner against any static electricity, which can cause the scanner to malfunction.

Do not use aerosol sprays near the scanner.



Do not use aerosol sprays to clean the scanner. Aerosol sprays can blow dirt and dust inside the scanner, resulting in scanner failure or malfunction.

Disconnect the power plug from the power outlet when the scanner is not used for a long period of time



When the scanner is not going to be used for a long period of time, be sure to disconnect the power plug from the power outlet for safety.

Do not install the scanner in direct sunlight.



Do not install the scanner under direct sunlight or near heating apparatus. Doing so might cause excessive heat to build up inside the scanner, which can cause scanner trouble or even fire. Install the scanner in a well-ventilated location.

Before moving the scanner, make sure the shipping lock is locked.



When moving the scanner, be sure to lock the shipping lock in order to prevent damages to the scanner.

Chapter 1 PREPARING THE SCANNER

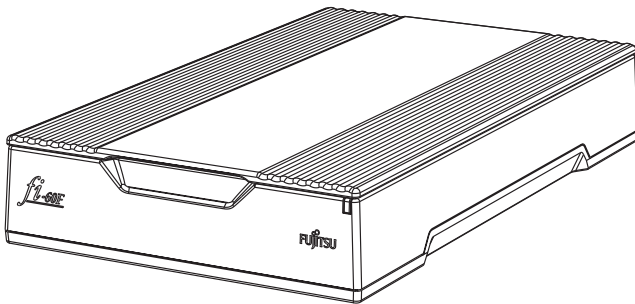
1.1 Checking the Contents of the Scanner Package

When you open the scanner package, please handle the main unit and its attachments carefully. Make sure it contains all the parts listed in the package contents list that is included in the package box. If any parts are missing or defective, contact your sales representative. Handle the scanner and accessories with care.

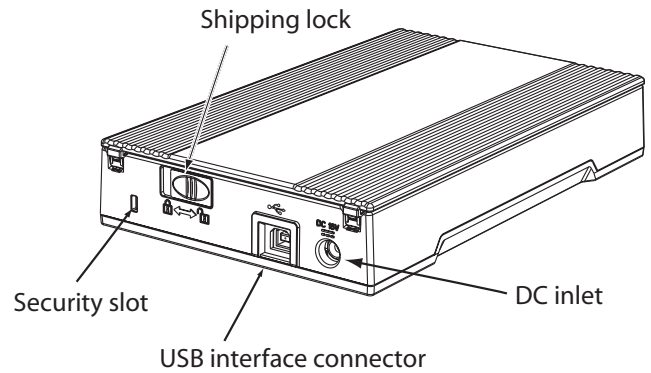
1.2 Names and Functions of Parts

This section describes the scanner parts and their functions.

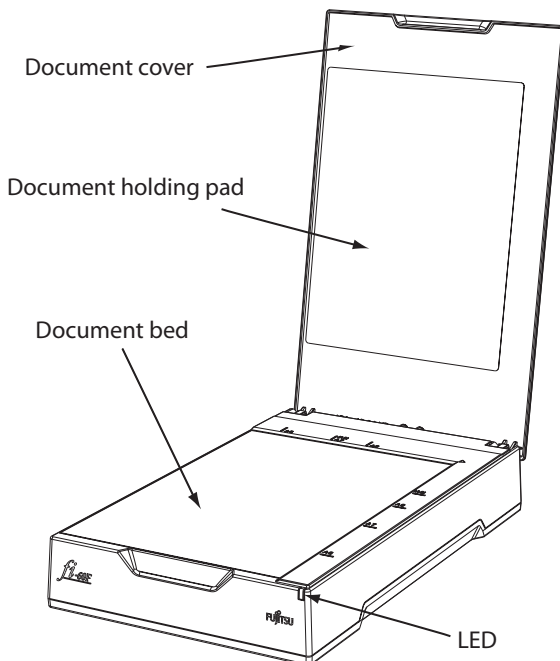
■ Front



■ Rear



■ Inside



Chapter 2 INSTALLATION OF THE SCANNER

2.1 Installing the Scanner Application

Both the scanner driver and image capturing application software (called "application" hereafter) must be installed on your PC.

Two types of drivers are available for this scanner, a FUJITSU TWAIN 32 Scanner Driver and a FUJITSU ISIS Scanner Driver, as well as two software applications, ScandAll 21 and QuickScan Pro™, are provided with this product. The following sections describe how to install each driver and application.



Please install the scanner driver before connecting the scanner to your PC.
If you connect the scanner before installing the scanner driver, the scanner will not operate correctly.
If you have connected the scanner beforehand, the "Found New Hardware Wizard" screen appears (this screen might differ slightly according to the used OS). On this screen, click the [Cancel] button to close the Wizard screen and install the scanner driver first.



For FUJITSU TWAIN32 Scanner Driver

■ Preparation

Confirm the following items before installing the application.

- Remove the Setup CD-ROM from its package, but do not insert the Setup CD-ROM into the CD driver yet.
- Uninstall any older versions of FUJITSU TWAIN 32 driver if already installed.



Uninstall [Scanner Utility for Microsoft Windows] from [Add/Remove Programs] of the control panel.



■ Installing the FUJITSU TWAIN32 Scanner Driver



Windows XP screenshots are used in this section as examples. The windows and operations may slightly vary depending on your OS.



1. Turn on your PC and log on to Windows.



When using Windows 2000 or Windows XP, log on as a user with "Administrator" privileges (privileges of the administrator of your PC).



2. Insert the Setup CD-ROM into the CD drive.

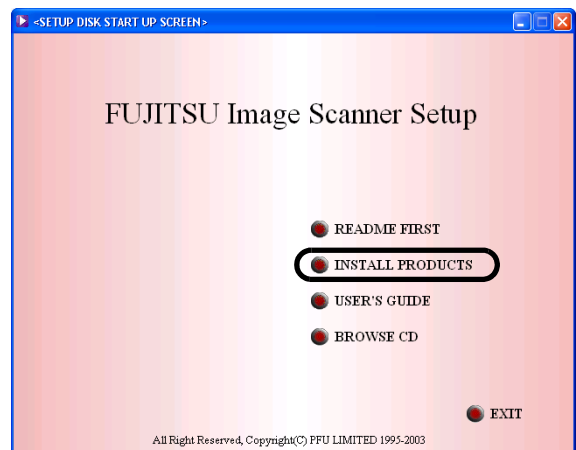
⇒ <SETUP DISK START UP SCREEN> appears.



This screen may not appear when the "Autoplay" setting of your PC is OFF. In this case, run "Install.exe" in this CD-ROM directly from the "Explorer" or "My Computer".



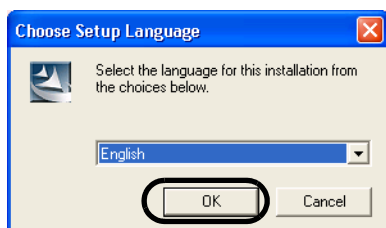
3. Click [INSTALL PRODUCTS].



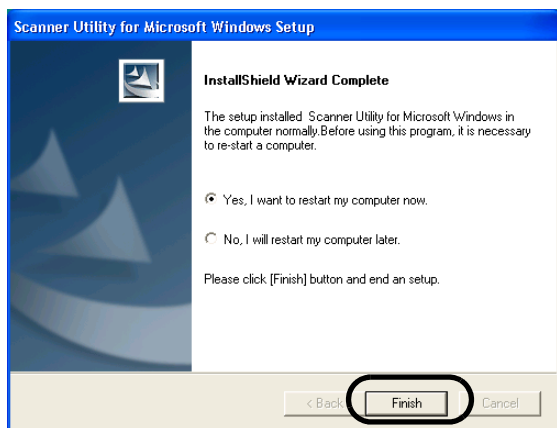
- Click [TWAIN Driver] on the window below.



- Select a language used for installation on [Choose Setup Language] window and click [OK].



- Follow the instructions on the window to install the application.
- When the [InstallShield Wizard Complete] window appears, click [Finish].



Your computer will be restarted. Do not remove the Setup CD-ROM from the CD drive until your PC has completely restarted.

Installation of the scanner driver is completed.



To confirm whether the installation was successful, perform a scanning operation with an application that complies with the TWAIN regulations such as ScandAll 21.



■ Installing ScandAll 21

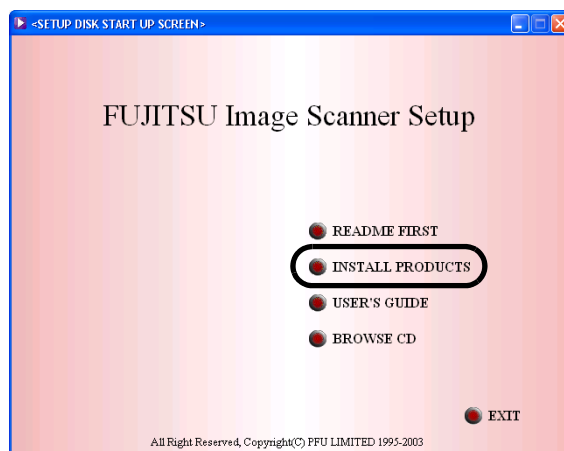
"Scandall 21" is an image capturing software that complies with the TWAIN standard. The FUJITSU TWAIN 32 scanner driver enables you to capture images with a FUJITSU image scanner fi-series product.



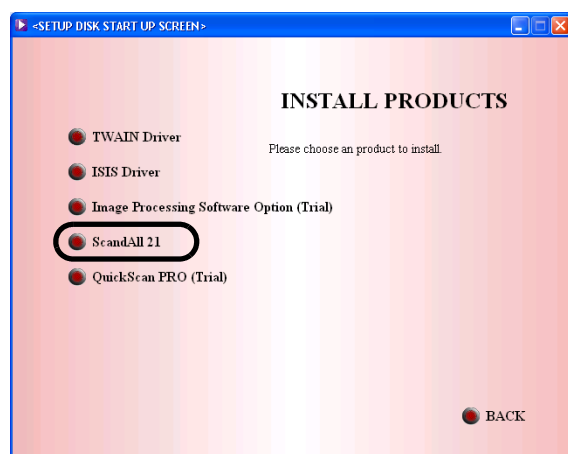
When using Windows 2000 or Windows XP, log on as a user with "Administrator" privileges (privileges of the administrator of your PC).



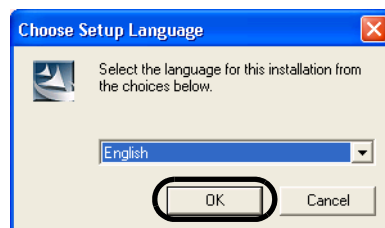
- Insert the Setup CD-ROM into the CD drive.
⇒ <SETUP DISK START UP SCREEN> appears.
- Click [INSTALL PRODUCTS].



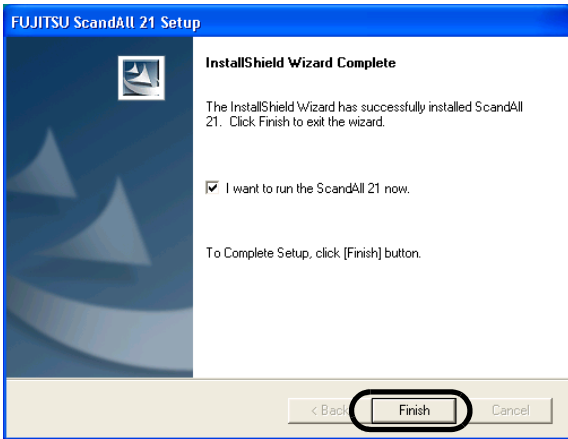
- Click [ScandAll 21] on the window below.




- Select a language used for installation on [Choose Setup Language] window and click [OK].



5. Install the application following the instructions on the window.
6. When the [InstallShield Wizard Complete] window appears, click [Finish]



ATTENTION  To finish the installation, it may be necessary to restart your computer. Follow the instructions on the window.


For FUJITSU ISIS Scanner Driver

■ Preparation


Confirm the following items before installing the driver application.

- Remove the Setup CD-ROM from its package, but do not insert the Setup CD-ROM into the CD driver yet.


■ Installing the FUJITSU ISIS Scanner Driver

HINT  Windows XP screenshots are used in this section as examples. The windows and operations may vary slightly depending on your OS.

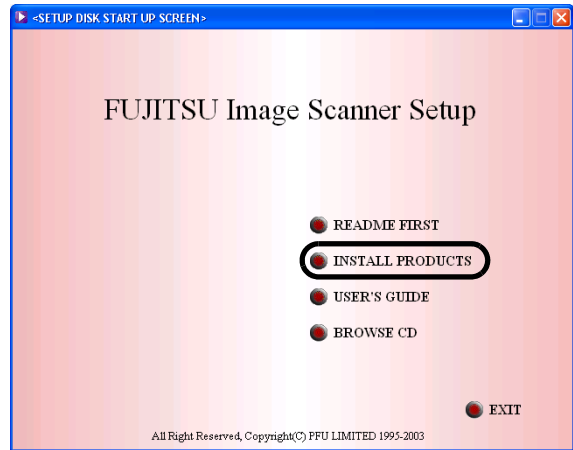
1. Turn your PC on and log on to Windows.

ATTENTION  When using Windows 2000 or Windows XP, log on as a user with "Administrator" privileges (privileges of the administrator of your PC).

2. Insert the "Setup CD-ROM" into the CD drive.
⇒ <SETUP DISK START UP SCREEN> appears.

ATTENTION  This screen may not appear when the "Autoplay" setting of your PC is OFF. In this case, run "Install.exe" in this CD-ROM directly from the "Explorer" or "My Computer".

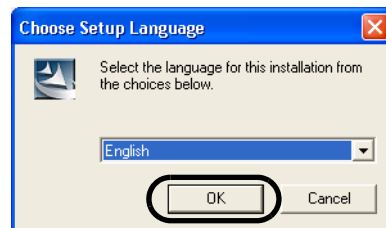
3. Click [INSTALL PRODUCTS].



4. Click [ISIS Driver] on the window below.



5. Select a language used for installation on [Choose Setup Language] window and click [OK].



6. Follow the instructions on the window to install the application.
7. When the [InstallShield Wizard Complete] window appears, click [Finish].

Your computer will be restarted. Do not remove the Setup CD-ROM from the CD drive until your PC has completely restarted
 Now the installation of the scanner driver is completed.

■ Installing QuickScan Pro™

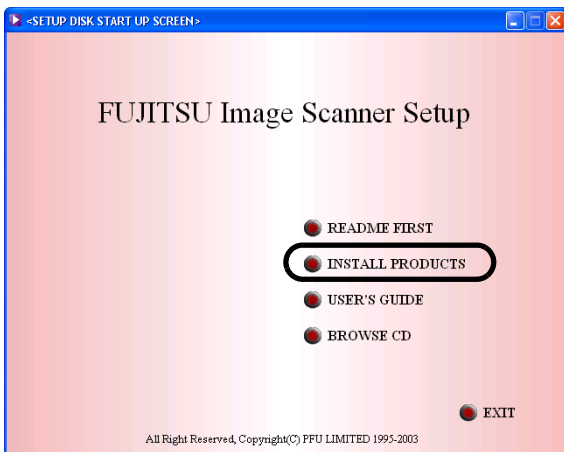
"QuickScan Pro™" is an image capturing software that complies with the ISIS standard. The FUJITSU ISIS scanner driver enables you to capture images with a FUJITSU image scanner fi-series product.



When using Windows 2000 or Windows XP, log on as a user with "Administrator" privileges (privileges of the administrator of your PC).



1. Insert the Setup CD-ROM into a CD drive.
 ⇒ <SETUP DISK STARTUP SCREEN> appears.
2. Click [INSTALL PRODUCTS].



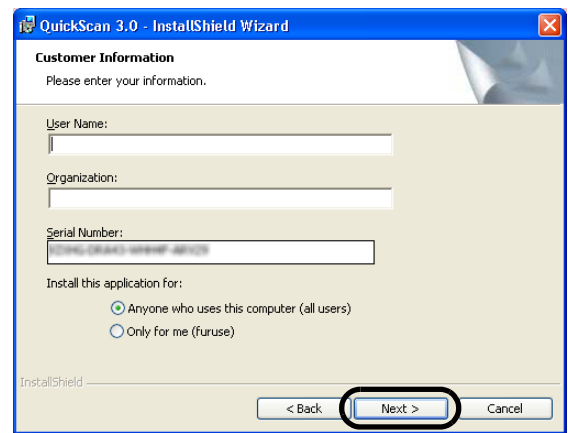
3. Click [QuickScan PRO (Trial)] on the window below.



4. Continue to install the application following the instructions on the window.



5. Enter the required information, then click [Next >] button.



"QuickScan Pro™" included in the Setup CD-ROM is an evaluation version. For further use after the expiration of its evaluation period of up to 30 launches, it is necessary to purchase a fully functional version of QuickScan Pro™. (When you install the evaluation version, do not change the Serial Number already displayed.)



6. Install the application following the instructions on the window.

2.2 Installing the Scanner

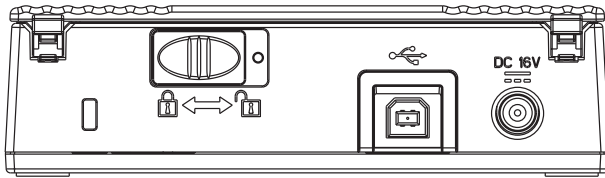
1. Place the scanner at its installation site.
 For details on the scanner's dimensions and required installation space, refer to "fi60F Operator's Guide" "4.2 Installation Specifications" in the Setup CD-ROM.

2. Unlock the Shipping lock.

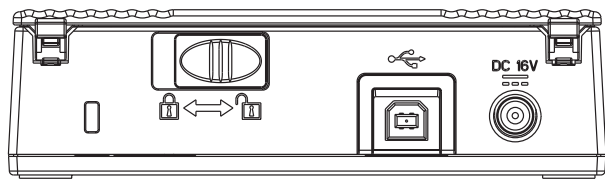
The carrier unit inside the scanner is secured by the shipping lock to prevent the scanner from becoming damaged during transportation from the factory.

To unlock the shipping lock and use the scanner, slide the switch on the rear of the scanner to the right.

(locked)



(unlocked)



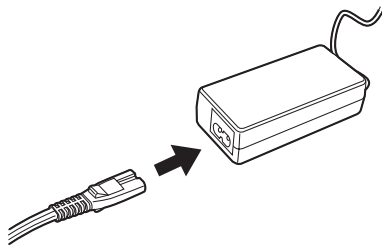
3. Connect the AC adapter.



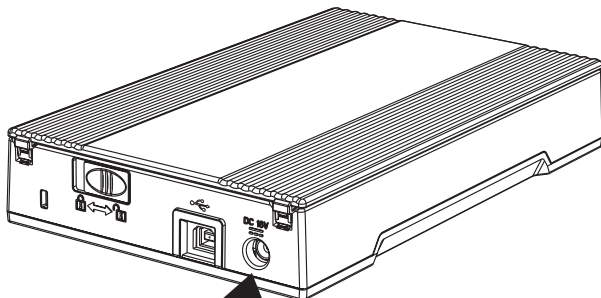
Use only the AC adapter and cable provided by the manufacturer.



- 1) Connect the AC cable to the AC adapter.



- 2) Connect the AC adapter connector to the scanner's DC inlet.

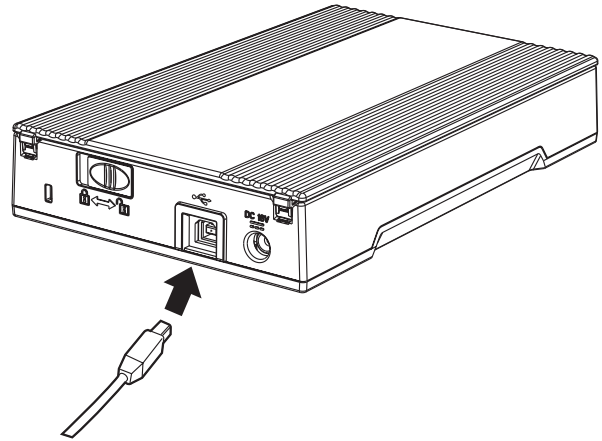


- 3) Plug the AC cable into the outlet.

2.3 Connecting the Scanner to Your PC

■ Connecting the USB Interface Cable

1. Connect the USB interface cable to the USB interface connector.



2. Connect the other end of the USB interface cable to the PC.

Your scanner will be automatically detected.

For Windows 98:

When a request for inserting the CD-ROM for Windows 98 appears, insert it into the CD drive and click the [OK] button.

For Windows 2000:

When [Digital Signature not Found] appears, click [Yes].



- Be sure to use the USB cable which comes as an accessory with this scanner. Correct operation with commercially available cables is not guaranteed.
- When connecting to an USB hub, use the first stage USB hub that is closest to the computer. If you use the second or later hub stages, the scanner may not operate correctly.



The installation of the scanner is completed.

2.4 Confirming the Installation

■ Confirming with ScandAll 21

1. Load a document on the Scanner.

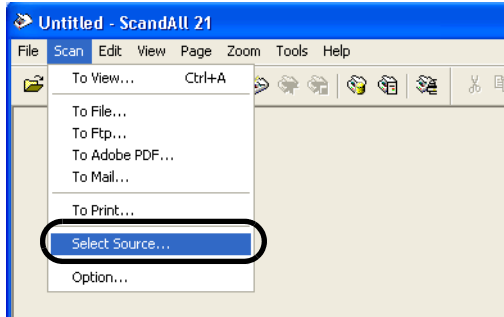
For details on how to load documents, refer to the "1.2 Loading Documents on Scanner for Scanning" in the fi-60F Operator's Guide provided in the CD-ROM.

2. Start ScandAll 21

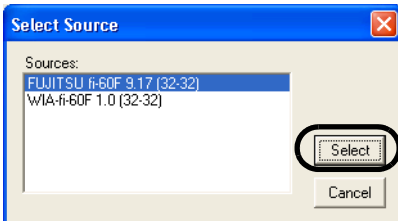
Select [Start] - [All Programs] - [Scanner Utility for Microsoft Windows] - [ScandAll 21].

3. Specify the scanner (that you will use).

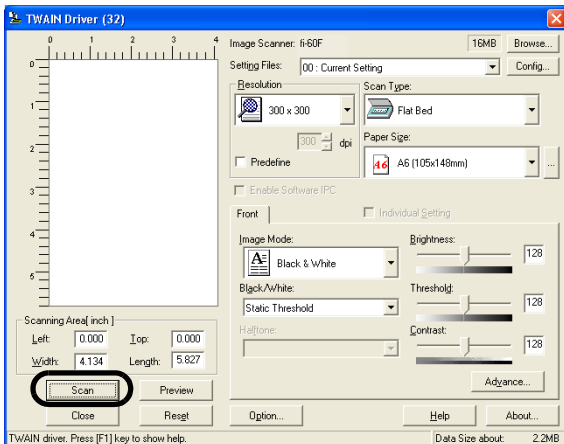
Select [Select Source...] from the [Scan] menu of ScandAll 21.




4. Select "FUJITSU fi-60" on the dialog box.

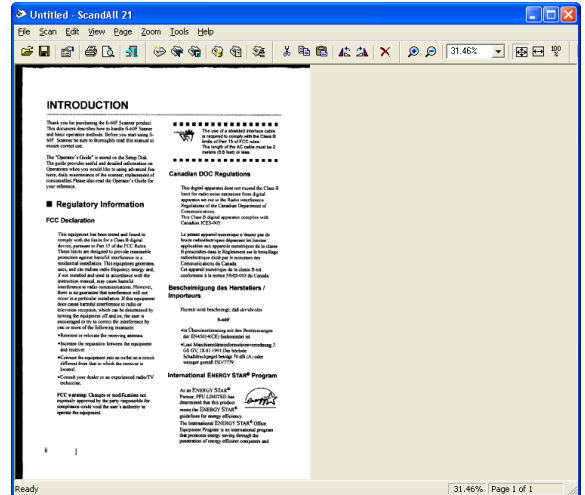


5. Select [To View...] from the [Scan] menu.
6. Set scanning resolution, document size, etc. on the [TWAIN driver] window (for setting details of scanning) and click the [Scan] button.



HINT  For details on [TWAIN driver], refer to the "FUJITSU TWAIN32 Scanner Driver User's Guide" provided on the Setup CD-ROM.

7. Documents are scanned, and the scanned images are displayed on the [ScandAll 21] window.



If the scanning completes without any trouble, the installation performed successfully.

For details on various types of scanning, refer to the "fi-60F Operator's Guide" on the Setup CD-ROM.

■ Confirming with QuickScan Pro™

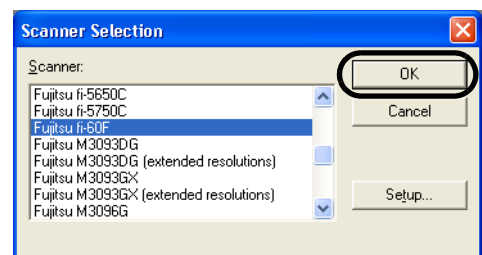
1. Load a document on the Scanner.

For details on loading documents, refer to "1.2 Loading Documents on the Scanner for Scanning" in the fi-60F Operator's Guide on the Setup CD-ROM.

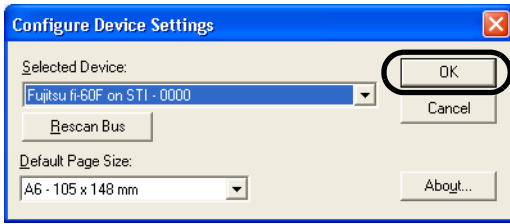
2. Start QuickScan Pro™.

From the [Start] menu select [All Programs]-[QuickScan]-[QuickScan].

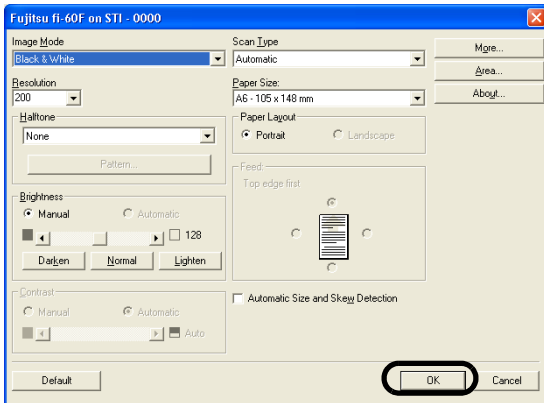
3. Select [Select Scanner...] from [Scan] menu in QuickScan Pro™.
4. Select fi-60F from the list of [Scanner:], and then click the [OK] button.



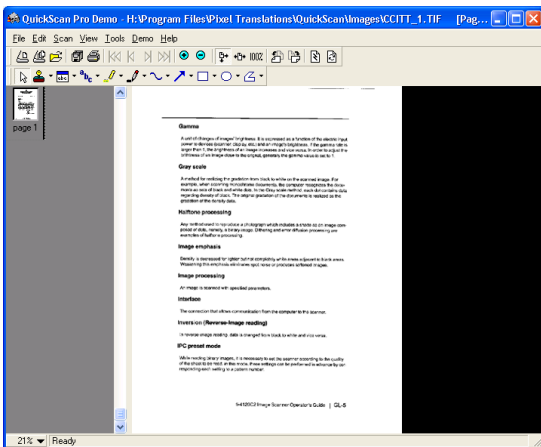
- Click [OK] button.



- Select [Preview Settings...] from the [Scan] menu. Set the scan resolution, paper size and other scanning requirements, and then click [OK].



- Select [Preview Scan] from the [Scan] menu. And then the document is scanned.




If the scanning completes without any trouble, the installation performed successfully.

2.5 Installing Adobe® Acrobat® Reader

To view Operator's Guide included in Setup CD-ROM, you will need to install "Adobe® Acrobat® Reader" on your PC. You can install this program from your <SETUP DISK START UP SCREEN> by clicking the "USER'S GUIDE" button and then clicking "Install Adobe Acrobat Reader".

Adobe, the Acrobat logo and Acrobat are registered trademarks of Adobe Systems Incorporated in the United States and/or other countries.

HINT  Refer to "QuickScan Overview" or "QuickScan Help" for information about QuickScan Pro™ functions and operations. On the [Start] menu, point to [All Programs]-[QuickScan] and click the file.

Appendix 1 TROUBLESHOOTING

■ Troubleshooting checklist

Symptom	Check this item	Remedy
Scanner does not turn on.	Are the AC cable, AC adapter and the USB cable properly connected to the scanner?	Correctly connect the AC and USB cable and the AC adapter. Disconnect the AC cable, the AC adapter and the USB cable from the scanner, then connect them again. If this does not restore the power supply, contact the store where you purchased the scanner or an authorized FUJITSU scanner service provider.
	Are you using the correct AC and USB cable and AC adapter supplied with the scanner from the manufacturer?	You must use the AC adapter and AC and USB cable supplied with your scanner by the manufacturer. Please get the correct AC adapter and cable to connect to your scanner.
	Is the scanner driver installed correctly?	Install the Scanner driver correctly. Refer to "2.1 Installing the Scanner Application".
Scanning does not start.	Did you unlock the shipping lock?	Unlock the shipping lock.
	Is the USB cable connected correctly?	Connect the USB cable correctly.
	Is the connector of the USB cable broken?	Use a new USB cable and connect it correctly.
	Does the scanning start after turning on the PC again?	The scanner operation is normal.
	Is the USB cable connected to a USB hub?	Connect directly into PC USB Port
Images are distorted or blurred.	Are the document bed and the document holding pad clean?	Clean the dirty locations as instructed in the Operator's Guide "2. Daily Care".
	Is something causing the scanner to vibrate during scanning?	Do not allow anything to cause the scanner to vibrate during scanning.
	Is the scanner installed on a flat, level surface?	Install the scanner on flat, level surface.
	Is the document curled or folded?	Place the document flat and hold it down slightly with the document cover.
There is a shadow on the leading edge of the scanned image.	Have you adjusted the offset?	Adjust the [Sub-scan Setting] on [Scanners and Cameras] in the control panel.

Symptom	Check this item	Remedy
When the document is scanned in Black & White mode, the image generated becomes black.	Are the Document holding pad and the Document bed of the scanner clean?	Clean the dirty locations as instructed in the Operator's Guide "2. Daily Care".
	Have you tried to adjust the settings of the scanner driver (Threshold or Brightness)?	Adjust the Threshold and/or Brightness.
	Did you scan a document so thin that the contents of the backside can be seen through?	Place a piece of white paper behind the document and scan again. - When there are any contents such as characters on the backside of the document, they may be seen through and appear in the scanned. - When using "Automatic Size and Skew detection", place a piece of white paper of the same size as the document behind the document.
Automatic paper size detection is failed.	Are the Document holding pad and the Document bed of the scanner clean?	Clean the dirty locations as instructed in the Operator's Guide "2. Daily Care".
	Did you scan with the document cover closed?	Close the document cover and scan it again.
	Is the document rectangular or square in shape?	If the document is other than rectangular or square, the scanner may fail to detect the size correctly. Specify the area to scan in the driver setting window manually and scan it again.
	Did you scan a document with any corner folded?	If the corner is folded, unfold it.
	Did you scan a document with dark-colored edge(s)?	If the document has dark-colored edge(s), the scanner may fail to detect the size correctly. Specify the area to scan in the driver setting window manually and scan it again.

Appendix 2 DAILY CARE

■ Cleaning Materials

Cleaning Materials	Parts Number	Remarks
Cleaner F1 (or isopropyl alcohol)	CA99501-0013	1 bottle Moisten the cloth with this fluid and wipe the scanner clean. (*)
Lint-free dry cloth	Any commercially available cloth	

* For details about cleaning materials, contact the FUJITSU scanner dealer where you purchased the scanner.

■ Parts to Clean

Part to clean	Remarks
Document holding pad	Clean the locations using a soft cloth moistened with cleaner F1.
Document bed	

fi-60F Image Scanner Getting Started

P3PC-1102-01EN

Date of issuance: October, 2004

Issuance responsibility: PFU LIMITED

- Copying of the contents of this manual in whole or in part and copying of the scanner application is forbidden under the copyright law.
- The contents of this manual are subject to change without notice.
- PFU LIMITED. is not liable whatsoever for any damages resulting from use of this scanner and procedures described in this manual, profit due to defects, and any claims by a third party.